

**MEMORIAL MIDDLE SCHOOL MUSIC ADDITION
SIOUX FALLS, SOUTH DAKOTA**

KOCH HAZARD ARCHITECTS

ADDENDUM DATE: February 26, 2019

SCOPE OF THIS ADDENDUM:

The following becomes a part of the original Drawings and Project Manual, taking precedence over the items that may conflict.

The bidder shall note receipt and make acknowledgement of this addendum on his bid form, incorporating its provisions in his bid.

Addendum issued to all Prime Contract Bidders and to all others to whom Drawings and Project Manuals have been issued by the Architect or Contractor.

NOTICE: PRE-BID MEETING TO BE HELD MONDAY, MARCH 4, 2019 AT 2:30 PM, AT MEMORIAL MIDDLE SCHOOL CONFERENCE ROOM A.

ADDENDUM-1

ITEM NO. 1: SUBJECT TO COMPLIANCE WITH REQUIREMENTS OF THE DRAWINGS AND PROJECT MANUAL, THE FOLLOWING PRODUCTS AND EQUIPMENT ARE APPROVED FOR USE IN THE PROJECT:

SECTION	ITEM	MANUFACTURER
042000	THRU-WALL FLASHING	YORK 304 SELF-ADHERED STAINLESS STEEL

ITEM NO. 2: TABLE OF CONTENTS - SPECIFICATIONS

1. Delete section 092216 NON STRUCTURAL METAL FRAMING.
2. Delete section 092900 GYPSUM BOARD.

ITEM NO. 3: MECHANICAL ADDENDUM

1. Mechanical addendum is attached.

ITEM NO. 4: ELECTRICAL ADDENDUM

1. Electrical addendum is attached.

END OF ADDENDUM-1

ADDENDUM M1

SIOUX FALLS SCHOOL DISTRICT
MEMORIAL MIDDLE SCHOOL ADDITION
SIOUX FALLS, SOUTH DAKOTA

DATE: February 26, 2019

Associated Consulting Engineering, Inc.
340 South Phillips Avenue
Sioux Falls SD 57104-6910

SCOPE OF THIS ADDENDUM:

The following becomes a part of the original Drawings and Project Manual, taking precedence over those items that may conflict.

The Bidder shall note receipt and make acknowledgment of this addendum on the bid form, incorporating its provisions in their bid.

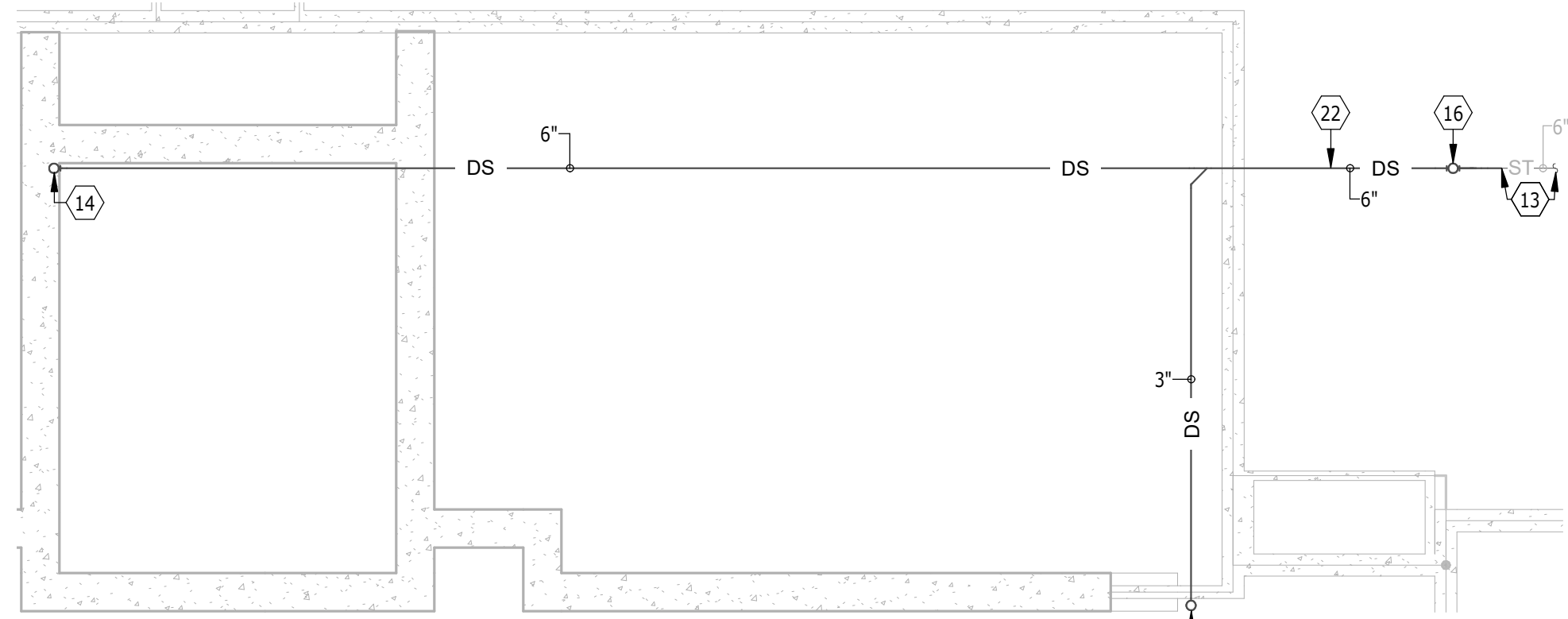
This addendum has been issued to all bidders and to all others to whom Drawings and Project Manuals have been issued by the office of the Architect/Engineer.

DRAWING ITEMS:

DRAWING SHEET M3.1
FLOOR PLANS – PLUMBING & HEATING

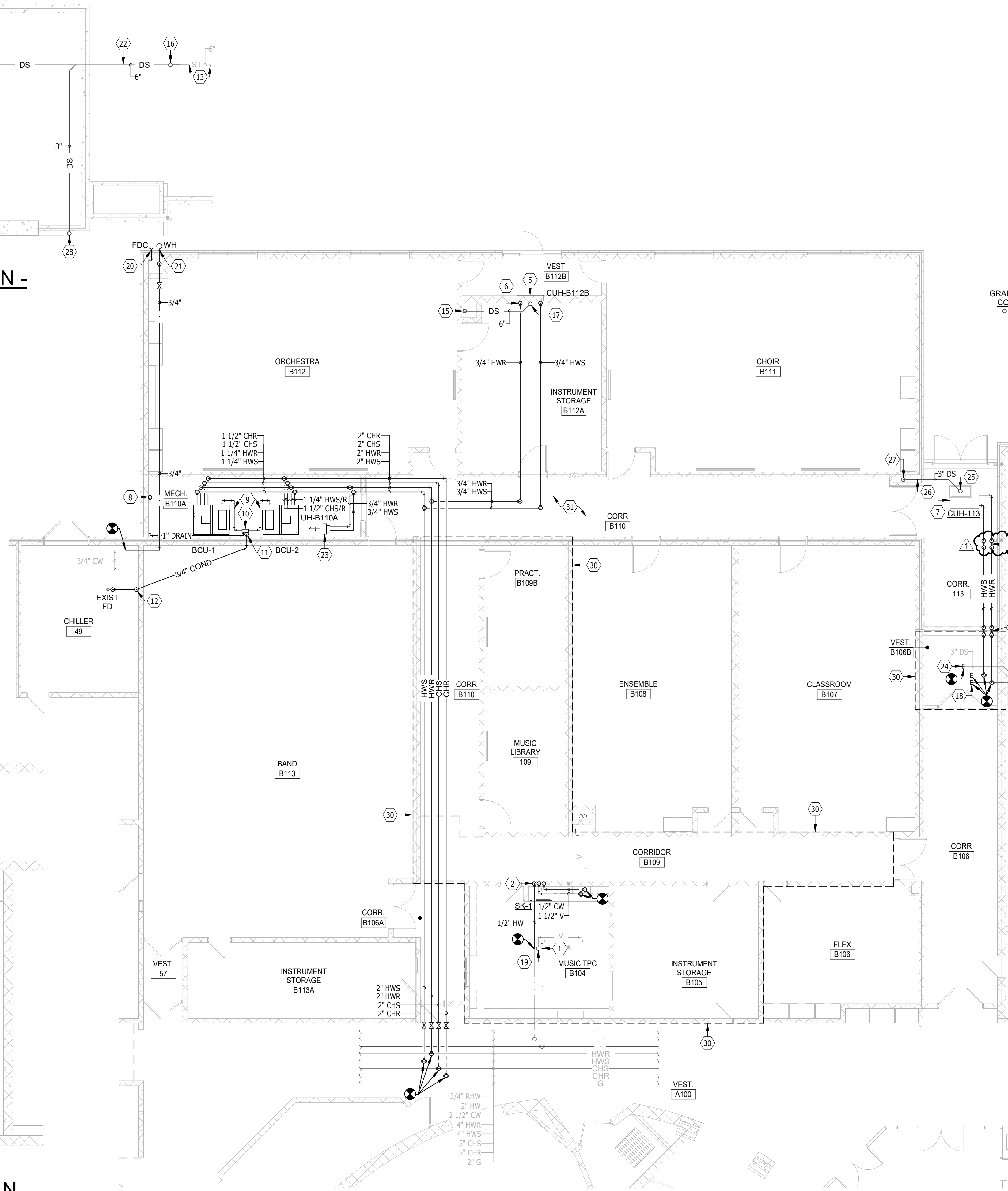
1. Revise routing of HWS/R to CUH-113 to transition piping around structure. See revised drawing sheet, dated 2/26/19.

END OF ADDENDUM



**PARTIAL UNDERFLOOR PLAN -
PLUMBING - CHOIR ROOM**

SCALE 0 4 8 12 16



FLOOR PLAN - PLUMBING & HEATING

SCALE 0 4 8 12 16

GENERAL SHEET NOTES

1. THE CEILING SPACE AVAILABLE REQUIRES COORDINATION WITH OTHER TRADES. THE CONTRACTOR SHALL PROVIDE ALL OFFSETS AND RELOCATE AS REQUIRED TO COORDINATE THE INSTALLATION OF ALL MATERIALS AND EQUIPMENT WITH OTHER TRADES.
2. ON DEMO DRAWINGS, ITEMS SHOWN LIGHT ARE EXISTING TO REMAIN.
3. ON DEMO DRAWINGS, ITEMS SHOWN DARK ARE EXISTING TO BE REMOVED.
4. ON MECHANICAL DRAWINGS, ITEMS SHOWN LIGHT ARE EXISTING TO REMAIN.
5. ON MECHANICAL DRAWINGS, ITEMS SHOWN DARK ARE NEW CONSTRUCTION.

PLUMBING & HEATING NOTES

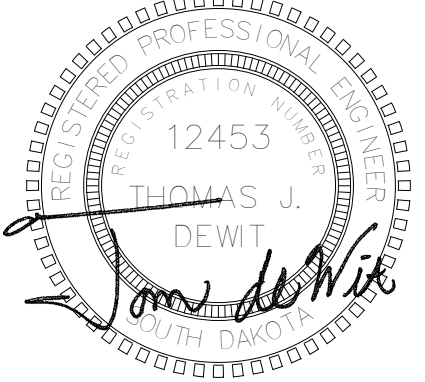
1. REPLACE PIPE AT FITTING OF DEMOLISHED RISER. CONFIRM EXACT SIZE AND LOCATION PRIOR TO WORK.
2. 1/2" HW DN, 1 1/2" V/2" W DN, 1/2" CW DN.
3. 2" W UP TO SK.
4. ROUTE W FROM SK TO EXISTING MAIN. CUTTING OF SLAB, SUBSEQUENT FLOOR PATCHING, AND INFILL BY GENERAL CONTRACTOR. FIELD VERIFY EXACT LOCATION OF MAIN PRIOR TO WORK.
5. HYDRONIC FULLY-RECESSED INVERTED FLOW CABINET UNIT HEATER. SEE UNIT HEATER PIPING DETAILS.
6. 3/4" HWS & 3/4" HWR DN TO CUH.
7. RECESSED CEILING MOUNTED CABINET UNIT HEATER. SEE UNIT HEATER PIPING DETAILS.
8. EXTEND 1" DRAIN FROM LOUVER DRAIN PAN TO CONDENSATE PUMP.
9. CONDENSATE FROM BLOWER COIL UNIT TO CONDENSATE PUMP. SIZE PER MANUFACTURER'S RECOMMENDATIONS.
10. FLOOR-MOUNTED CONDENSATE PUMP. LITTLE GIANT SERIES VCMA-20 OR EQUIVALENT. PUMP SHALL BE CAPABLE OF AT LEAST 20 GPH AT 15 FEET OF HEAD.
11. COND PIPE UP FROM CONDENSATE PUMP. STUB INTO CEILING ABOVE 'BAND 113' AT HIGH ENOUGH ELEVATION TO ALLOW FOR GRAVITY DRAIN TO 'CHILLER 49' ROOM.
12. COND PIPE DOWN TO FLOOR. ROUTE ALONG FLOOR TO EXISTING FD. ANCHOR PIPE TO FLOOR AS NECESSARY.
13. CONNECT TO PIPING PROVIDED BY SITE UTILITY CONTRACTOR OR PLUMBER. SEE SITE UTILITY DRAWINGS FOR CONTINUATION.
14. 6" DS UP.
15. 6" DS DN W/ CO 24" AFF.
16. 4" DS UP TO GRADE CO.
17. 6" DS UP TO 6" RD. NO ORD, SCUPPERS BY ARCHITECT.
18. CAP EXISTING HWS/R AFTER DEMO OF EXISTING CUH.
19. CONFIRM EXACT LOCATION OF V UP THROUGH ROOF. COORDINATE SO THAT VTR AND ASSOCIATED CONNECTIONS REMAIN.
20. RELOCATE EXISTING FDC APPROXIMATELY AS SHOWN. COORDINATE RELOCATION REQUIREMENTS, INCLUDING NEW PIPE ROUTING AND CONNECTIONS. PRIOR TO WORK.
21. RELOCATE EXISTING WALL HYDRANT AND CORRESPONDING SHUT-OFF VALVE APPROXIMATELY AS SHOWN. COORDINATE RELOCATION REQUIREMENTS, INCLUDING NEW PIPE ROUTING AND CONNECTIONS. PRIOR TO WORK.
22. INSULATE ROOF DRAINAGE/STORM SEWER BETWEEN BUILDING FOOTPRINT AND GRADE CO ACCORDING TO DETAIL. REFER TO ARCHITECTURAL PLANS FOR INSULATION OF STORM SEWER BEYOND GRADE CO.
23. HYDRONIC PROP TYPE UNIT HEATER HUNG FROM STRUCTURE. SEE UNIT HEATER PIPING DETAIL.
24. CAP EXISTING ROOF DRAIN PIPING AT EXTENT OF DEMOLITION.
25. 3" DS UP TO 3" RD. NO ORD, SCUPPERS BY ARCHITECT.
26. ROUTE DS BENEATH BEAM IN APPROXIMATE LOCATION SHOWN.
27. 3" DS DN W/ CO 24" AFF.
28. 3" DS UP.
29. TRANSITION HWS/R IN SOFFIT TO ROUTE BENEATH EXISTING BEAM APPROXIMATELY AS SHOWN.
30. MODIFY EXISTING FIRE SPRINKLER SYSTEM IN DASHED AREA AS REQUIRED PER NFPA 13.
31. EXTEND EXISTING FIRE SPRINKLER SYSTEM TO SERVE NEW ADDITION PER NFPA 13. SEE SPECIFICATION.

KOCH • HAZARD
ARCHITECTS

431 N Phillips Avenue, Suite 200
Sioux Falls, South Dakota 57104
T: 605.336.3718
F: 605.336.0438
W: kochhazard.com

**Associated
Consulting
Engineering,
Incorporated**

340 S. Phillips Ave.
Sioux Falls, SD 57104
(605) 335-3720
Fax 335-6220
E-mail ace@aceinet.com



MARK	DATE	DESCRIPTION
1	2/26/19	Addendum 1

PROJECT NO.:	DRAWN BY:
118113	TNS
DATE	COPYRIGHT
2-20-19	2019
PROJECT	
SIOUX FALLS SCHOOL DISTRICT MEMORIAL MIDDLE SCHOOL ADDITION SIOUX FALLS, SD	
SHEET	
FLOOR PLANS - PLUMBING & HEATING	

M3.1

ADDENDUM E1

SIoux FALLS SCHOOL DISTRICT
MEMORIAL MIDDLE SCHOOL ADDITION
SIoux FALLS, SOUTH DAKOTA

DATE: February 26, 2019

Associated Consulting Engineering, Inc.
340 South Phillips Avenue
Sioux Falls SD 57104-6910

SCOPE OF THIS ADDENDUM:

The following becomes a part of the original Drawings and Project Manual, taking precedence over those items that may conflict.

The Bidder shall note receipt and make acknowledgment of this addendum on the bid form, incorporating its provisions in their bid.

This addendum has been issued to all bidders and to all others to whom Drawings and Project Manuals have been issued by the office of the Architect/Engineer.

DRAWING ITEMS:

DRAWING SHEET E1.0

ORIENTATION PLAN - ELECTRICAL

1. See attached drawing sheet for reference of existing FACP, existing paging headend, and existing telecom rack locations.
2. In lieu of using existing Panel 'L5' and existing spare circuit breakers for new loads, provide the following new equipment in Storage Room keynoted #1:
 - a. Add new 42-space, 100A, 120/208V, 3-phase, Panel '5A' fed from existing 480V Panel 'M' via new 45kva step-down transformer.
 - b. Add 90A/3P circuit breaker in existing Panel 'M' and include associated raceway and conductors to serve new transformer/panel.

DRAWING SHEET E1.3

FLOOR PLAN – POWER & SIGNAL

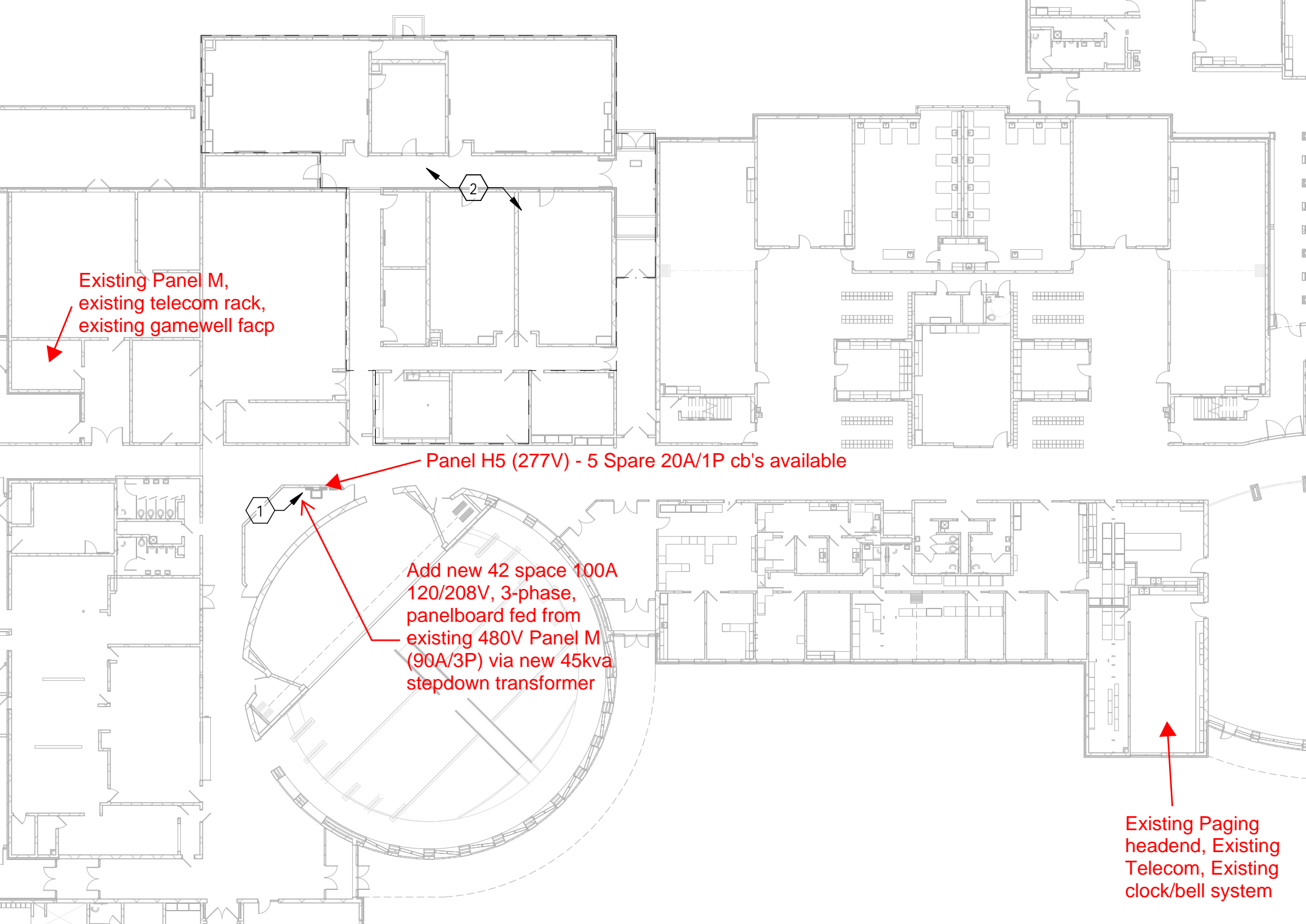
1. In lieu of using existing Panel 'L5' and existing spare circuit breakers for new loads, feed new loads from new Panel '5A' per attached panel schedule.

DRAWING SHEET E2.0

SCHEDULES

1. Omit redundant mechanical equipment connection schedule.
2. Add attached Panel L5A schedule for serving new loads.

END OF ADDENDUM



Existing Panel M,
existing telecom rack,
existing gamewell facp

Panel H5 (277V) - 5 Spare 20A/1P cb's available

1

Add new 42 space 100A
120/208V, 3-phase,
panelboard fed from
existing 480V Panel M
(90A/3P) via new 45kva
stepdown transformer

Existing Paging
headend, Existing
Telecom, Existing
clock/bell system

PANELBOARD: L5A

LOCATION: Space 154

VOLTAGE: 208Y/120 V. 3 ϕ 4 W.

MOUNTING: SURFACE NEMA 1

A.I.C. RATING: 10,000 AMPS SYMMETRICAL

MAIN DEVICE: 100 A MAIN CB

SPECIAL:

BUS AMPS: 100 AMPS

LOAD DESCRIPTION	BKR	POLES	CKT	A		B		C		CKT	POLES	BKR	LOAD DESCRIPTION
RCPT PRACTICE B102	20 A	1	1	0.4	0.5					2	1	20 A	RCPT MECH B110A
RCPT ORCHESTRA B112	20 A	1	3			1.1	0.9			4	1	20 A	RCPT ORCHESTRA B112
RCPT CORR B110	20 A	1	5					0.7	1.1	6	1	20 A	RCP CHOIR B111
RCPT CHOIR B111	20 A	1	7	0.7	0.8					8	3	15 A	MOTORS BCU-2
MOTORS BCU-1	20 A	3	9			1.3	0.8			10	--	--	--
--	--	--	11					1.3	0.8	12	--	--	--
--	--	--	13	1.3	0.0					14	1	20 A	MTR
Spare	20 A	1	15			0.0	0.0			16	1	20 A	Spare
Spare	20 A	1	17					0.0	0.0	18	1	20 A	Spare
Spare	20 A	1	19	0.0	0.0					20	1	20 A	Spare
Spare	20 A	1	21			0.0	0.0			22	1	20 A	Spare
Spare	20 A	1	23					0.0	0.0	24	1	20 A	Spare
Space	--	--	25	0.0	0.0					26	--	--	Space
Space	--	--	27			0.0	0.0			28	--	--	Space
Space	--	--	29					0.0	0.0	30	--	--	Space
Space	--	--	31	0.0	0.0					32	--	--	Space
Space	--	--	33			0.0	0.0			34	--	--	Space
Space	--	--	35					0.0	0.0	36	--	--	Space
Space	--	--	37	0.0	0.0					38	--	--	Space
Space	--	--	39			0.0	0.0			40	--	--	Space
Space	--	--	41					0.0	0.0	42	--	--	Space
	TOTAL LOAD:			4 kVA		4 kVA		4 kVA					
	TOTAL AMPS:			29 A		33 A		32 A					
LOAD CLASSIFICATION	CONNECTED			DEMAND		ESTIMATED		PANEL TOTALS					
RCPT	5220 VA			100.00%		5220 VA							
MOTORS	6569 VA			100.00%		6569 VA		CONNECTED LOAD:				11192 VA	
MTR	0 VA			0.00%		0 VA		ESTIMATED DEMAND:				11192 VA	
								CONNECTED CURRENT:				31 A	
								EST. DEMAND CURRENT:				31 A	
NOTES:													